



LEAMINGTON

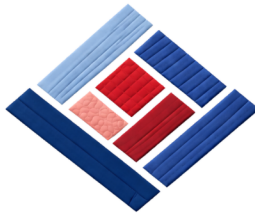
*Mennonite Home*

# Building a Future of Compassionate Care

*A Capital Campaign for the New Assisted Living Retirement Residence and amenity spaces for the Complex at the Leamington Mennonite Home*



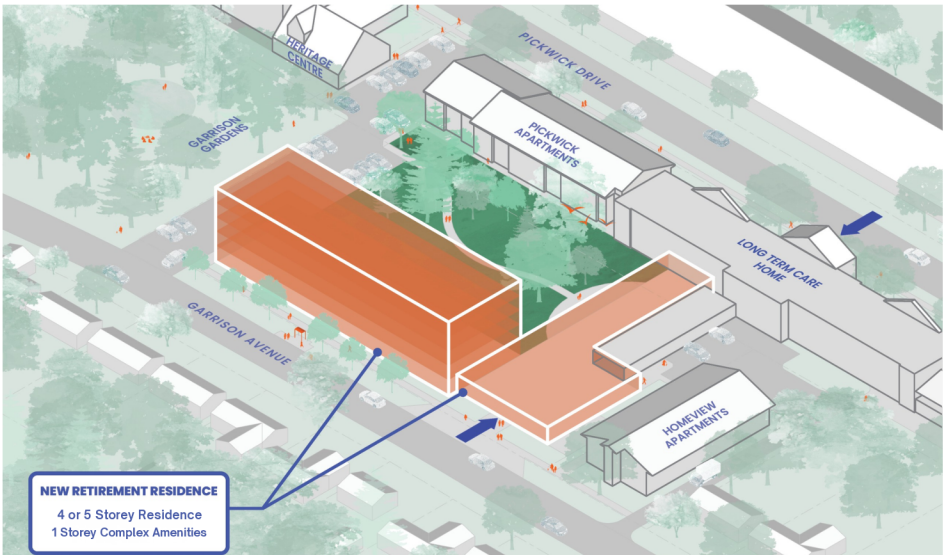
Every square tells a story...



Can you help us build the next chapter at LMH?



One Story, One Square at a time.



Concept visual provided by Glos Associates Inc. Concept visual illustrating preliminary development intent and overall massing based on site constraints, as design will evolve into a realistic form through engagement and further design development.

# Continuing Care

---



Every day, the LMH residents share quiet stories that remind us why this work matters and why we need a new facility:

- A widow who finds companionship again in the dining room.
- A retired farmer who finds peace in a place that honours his independence.
- A daughter who can finally rest knowing her father is safe and cared for.

Yet, these stories are becoming harder to sustain in a building that no longer meets the realities of aging and accessibility.

## CONTENTS

02 *Mission*

---

04 *Vision*

---

07 *Journey*

---

09 *Call to Action*

---



*“Lord, you have been our dwelling place throughout all generations.”*  
— Psalm 90:1

# A Home Rooted in Compassion & Community

For over 60 years, the Leamington Mennonite Home (LMH) has been a place where compassion lives, where residents are known by name, cared for with dignity, and surrounded by a faith-based community that feels like family. From its beginnings, LMH has been guided by the belief that every individual deserves a safe, nurturing place to call home, especially during the later chapters of life. Thousands of seniors have found that home here, where care is personal, where faith is lived out daily, and where love and community shape every interaction.

## *Vision Statement*

Residents First - through faith-based commitment, compassion, and community.

## *Mission Statement*

Our legacy inspires our commitment to compassionate care. Guided by faith-based values, we strive for excellence, accountability, and uniqueness in providing the best care and well-being for each life we touch.

## *Core Values*



### Faith

Our Home's values are rooted in our Christian faith and Mennonite heritage.



### Community

We provide a feeling of home and a sense of community.



### Adaptability

Our actions are guided by best care practices and the changing needs of the community.



### Dignity

Dignity and respect are the foundation of our relationships.



### Care

Our care practices are driven by our compassion for our residents and their families.



### Teamwork

A collaborative staff and a supportive community ensure the best individualized care.



### Compassion

Our care practices are driven by our compassion for our residents and their families.



### Trust

We honour the trust placed in us by residents and their families.



The LMH Assisted Living Retirement Residence has been a cornerstone of the mission for six decades. The home provides a lifeline for seniors who can no longer live independently, those facing medical challenges, mobility limitations, or disabilities - allowing residents to receive compassionate, daily support while remaining part of a community the residents cherish.

# A Building That No Longer Serves Today's Seniors' Needs

---

## Rooted in Community: The Story of John & Edith Wiens



More than 60 years ago, John and Edith Wiens with many others became involved in the process of creating a home of care for seniors in their community. Long before LMH became a fixture of community life, John participated in the original purchase of the land, which had been the Danforth farm.

John and Edith were becoming aware of the need for a place where their own parents could be cared for and one day where they too could retire within a community where they felt a sense of belonging. Having been involved in construction in the area with his brother, Walter, John knew what would be involved in completing such a large project. Through the planning phase and the building of the Home, John was a member of the first LMH Board of Directors, and Edith volunteered as a member of the first Ladies Auxiliary.

Their awareness of this need became a reality when they both had parents living at LMH. Later, John and Edith moved into what had grown into a vibrant senior community, first to the townhouses and then into the Retirement Residence. “To think that I was here to watch the initial building go up and then see how the Home has grown over 60 years, is incredible,” Edith says.

Today, after John’s recent passing, Edith is grateful for the atmosphere LMH provides. She feels comfortable and well cared for. She can come and go, enjoy meals, participate in activities, especially painting which she particularly enjoys. Edith also loves getting her hair done at the home in the salon. “I’m so happy to live here,” she says. “The community takes care of me.”



As LMH just recently marked six decades of compassionate care and is now launching a new development project, Edith looks ahead with the same hope and interest she and John had 60 years ago. She’s eager to see how the Home will keep growing and continuing the work they and so many others participated in from the very beginning.





---

The current Retirement building that once symbolized innovation and care is now over 60 years old and is in need of replacement.

---

Time has taken its toll:

- The structure no longer meets modern accessibility standards
- Many suites lack private washrooms and personal temperature control
- Limited space prevents residents from engaging fully in community life

This building no longer reflects the dignity, comfort, and safety our residents deserve. The residents needs have changed - and so must the environment the residents live in.

# The Vision: A New Assisted Living Retirement Residence and Amenity Spaces for the Complex

---



We envision a new Assisted Living Residence and amenity spaces for the complex that embodies the LMH vision of Residents First - a space where seniors can live independently, yet never alone.

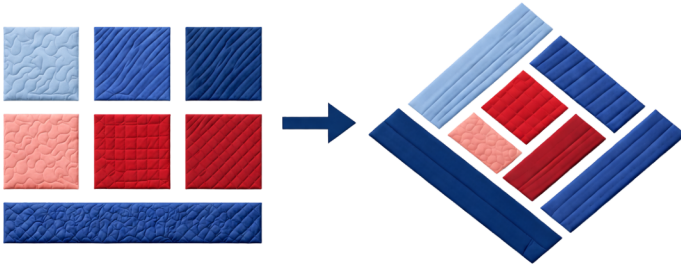
---

The new facility will:

- Allow more seniors to age in place near family and friends and the community
- Improve safety and accessibility
- Create vibrant community spaces for dining, wellness, and social connection
- Enable staff to provide personalized care in an environment
- Designed for today's medical and mobility standards
- Incorporate sustainability and efficiency, ensuring stewardship of resources for generations to come

Each brick will represent compassion in action - a lasting investment in human dignity and the future of care in Leamington. The new Assisted Living Home and amenity spaces for the complex will deliver on these needs, built with direct input from residents, staff, resident families and the whole LMH Community.

*Each quilt square represents your contribution to bring us one stitch closer to a new home.*



## A Collaborative Journey Ahead

This project represents a positive step forward for the LMH community.

The following preliminary plans are in place:

- A resident plan to ensure that the current residents remain supported and are not displaced during the project
- A financial plan to ensure that our organization plans appropriately for long term sustainability

Once these two plans have been completed, the project will proceed. A Feasibility and Building Construction Development Plan will be developed and supported through resident, staff, and community engagement.

This is more than a construction project – it is a promise to the community and a commitment to future generations.

*Each piece, a purpose. Together, a future.*

Each square of the new residence will tell a story - a story of love, faith, and resilience. Together, we can build the next chapter of LMH - *one story, one square at a time.*

With gratitude on behalf of the residents of LMH.



*Your legacy story belongs here. Every square stitched together brings care, comfort, and community to life.*

# Build the heart of our future, one story—one square—at a time.



---

*Help us stitch the next chapter - every square has a story.*

A building is a building, but at the Leamington Mennonite Home (LMH) it's the people...

Residents first - through faith-based commitment, compassion, and community.

Today 273 people call the Leamington Mennonite Home complex their home. Supported by the dedicated care of over 200 staff, our home is more than just a place to live - it's a place to thrive. It's where seniors enjoy everything from independent and supportive living to long-term care, all within an environment rooted in compassion and shaped by our rich Mennonite heritage. The residents live in a variety of settings: life lease townhouses, apartments, geared-to-income housing, retirement home, and our long-term care facility. No matter where they reside, they're part of one community - the LMH community.

What makes this possible? It's our foundation: the eight local Mennonite churches that not only provide financial support, but whose members give of their time and hearts to volunteer, ensuring our residents are seen, heard, and valued every day.

Guided by our Board of Directors and supported by committed members from each of our founding churches, we remain a non-profit organization with a mission that has endured for six decades - and will continue far beyond. 100% of ALL donations directly impact the residents and their families.

*We are relying on the community to help build this new facility.*

*LMH invites you: every person, family, every church touched by LMH to contribute their “square” to this vision.*

When you make a gift, you're not just supporting construction, you're creating a place of warmth, dignity, and belonging for years to come.

Just as a quilt is made from many individual pieces, this new residence will be built piece by piece - gift by gift. Your support today helps lay the foundation for what comes next.

- *Heritage*: “A tradition of care, stitched with love”
- *Continuity*: “From past generations to future residents, each thread tells a story”
- *Unity*: “It takes many hands to make a quilt - and many hearts to build a home”
- *Faith & Care*: “As threads bind a quilt, our faith binds our community”



### *Naming Opportunities for the Assisted Living Building*

Supporters will have the chance to leave a lasting legacy and naming opportunities will be discussed once the engagement strategy and schematic design process has been completed with LMH and Glos Architects and Engineers. Once the design of the unit tower and the complex amenity spaces have been confirmed through this process we can provide you with specific opportunities and naming levels.

Your gift is more than a donation - it is a cornerstone of compassionate care. Make a one-time gift, monthly pledge, or legacy donation today.

**Your support sustains a community of care - residents rely on you.**

If you would like to make a donation, please include your contact information for a charitable receipt and return this form to the front office or donation drop boxes at 35 Pickwick Dr. or 22 Garrison Ave. Alternatively, please visit [mennonitehome.ca](http://mennonitehome.ca) to support LMH online.

Name: \_\_\_\_\_

Address: \_\_\_\_\_

City/Province: \_\_\_\_\_ Postal Code: \_\_\_\_\_

Phone Number: \_\_\_\_\_

*Do you wish to receive email communications from LMH? You may unsubscribe at any time.*  Yes  No

Email Address: \_\_\_\_\_

Amount: \_\_\_\_\_ Cash: \$ \_\_\_\_\_ Cheque: # \_\_\_\_\_

Cardholder Name: \_\_\_\_\_

Card Number: \_\_\_\_\_

Expiry: \_\_\_\_\_ CVV: \_\_\_\_\_

**Thank you on behalf of the LMH Community!**

We invite you to tour the existing Retirement Residence at 22 Garrison Avenue and meet with us to help build the next chapter of LMH.

Alexandria Fischer-Janisse  
Director of Development | New Development Project Manager  
519-326-6109 x 267  
[alexandria@mennonitehome.ca](mailto:alexandria@mennonitehome.ca)

Jeff Konrad, Administrator

